



Overview of

SOLE - The International Society of Logistics

SOLE and You



Briefing Objectives

- Explain what SOLE is about and its organization
- Explain the benefits of being a member
- Explain the benefits derived from your local chapter
- Provide overview of SOLE's educational program and initiatives
- Discuss how to become a member of SOLE
- Identify upcoming activities
- Summarize then address/discuss questions



What is SOLE?

- Founded in 1966, SOLE - The International Society of Logistics is an *international, non-profit professional society*
 - of *individual and corporate* members
 - dedicated to the advancement of the *art and science of logistics* technology and management
 - through *literary, educational and scientific* endeavors.
- The Society's *chapters and members* engage in a wide variety of professional activities in pursuit of this objective in over 55 countries throughout the world

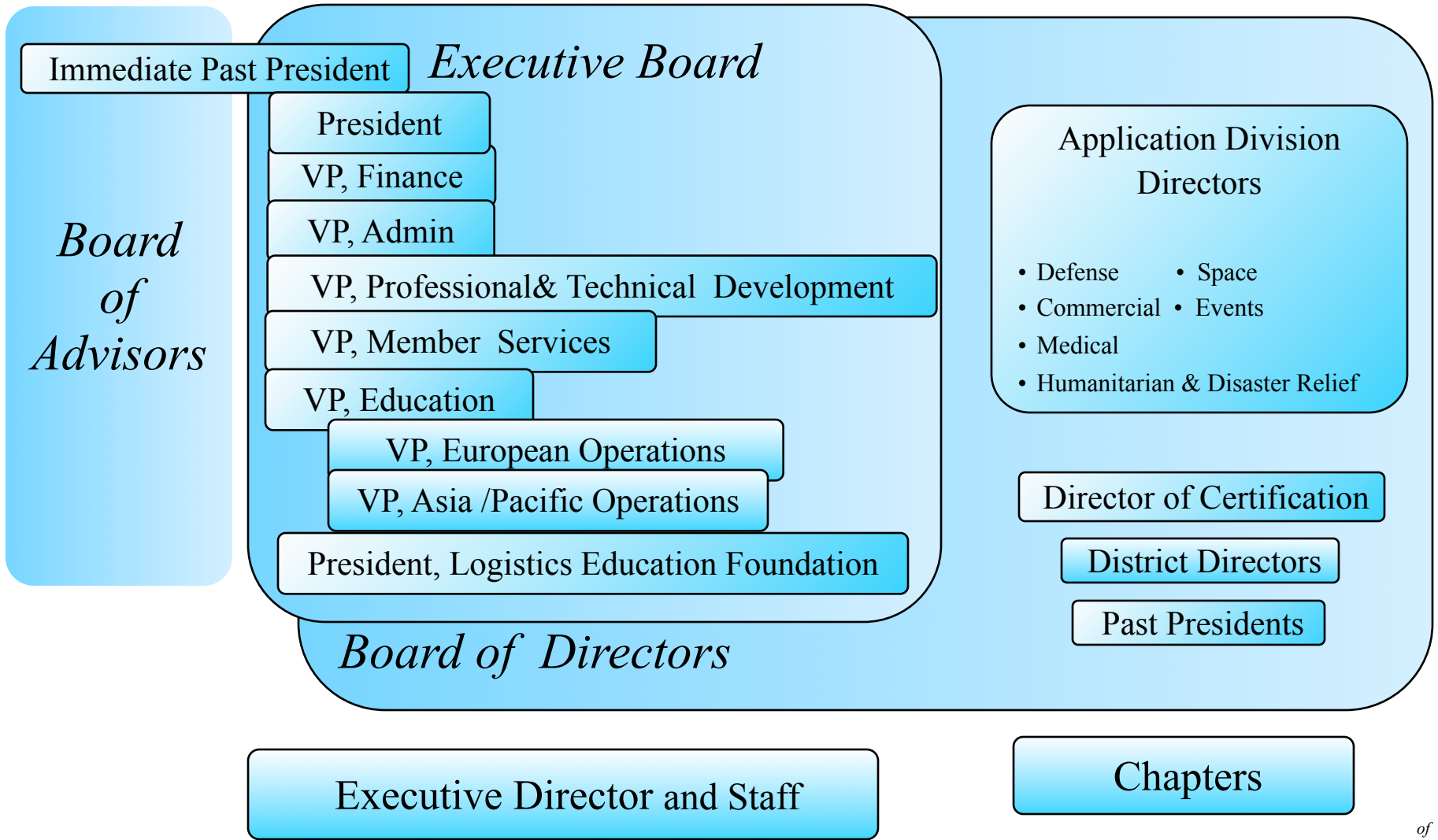


Organization

International membership with
decentralized operations and
integration for administration



Organization





Technical Focuses

- Commercial
- Defense
- Events
- Humanitarian and Disaster Relief
- Medical
- Space
- Configuration/Data Management
- Environmental
- Information Technology
- Logistics Standards
- Life Cycle Cost
- Maintainability
- Operations Management
- Program Management
- Reliability
- Supply Chain Management
- Supportability Engineering
- Technical Documentation
- Training

.....



Local Chapters

Meeting Member Needs at the Local Level

Districts and Chapters in the United States

Northern Mountain - 8

- Colorado,
- Idaho,
- Montana,
- Utah,
- Wyoming

North Central - 4

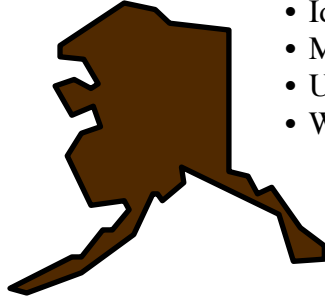
- Illinois,
- Indiana,
- Michigan,
- Ohio,
- Wisconsin

Central - 6

- Iowa,
- Kansas,
- Minnesota,
- Missouri,
- North Dakota,
- Nebraska,
- South Dakota

New England - 1

- Connecticut,
- Maine,
- Massachusetts,
- New Hampshire,
- Rhode Island,
- Vermont)

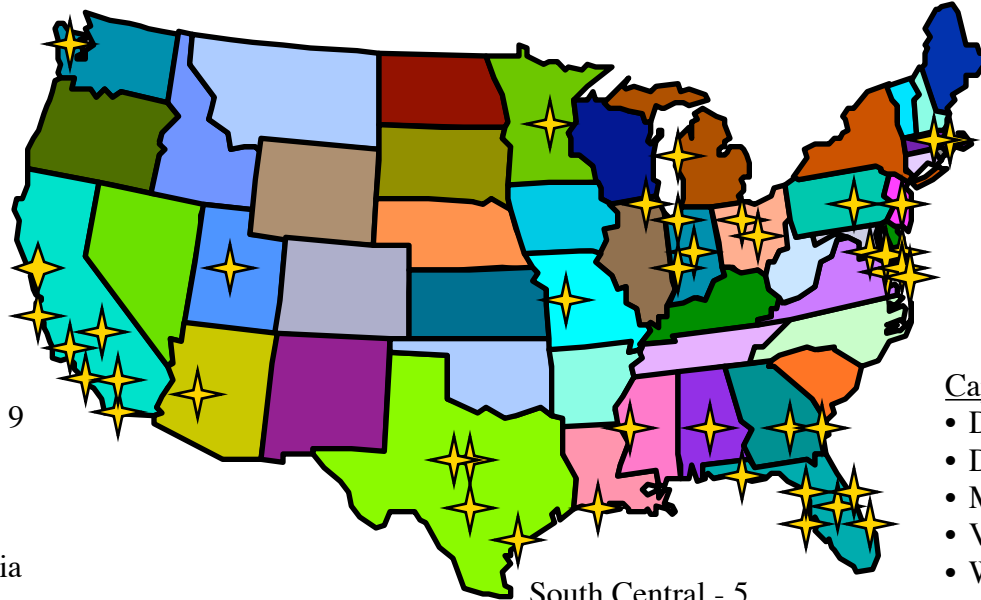


Pacific Northwestern - 16

- Alaska,
- Northern California,
- Oregon,
- Washington

Pacific Southwest - 9

- Arizona,
- Hawaii,
- Nevada,
- Southern California



Northeastern 10

- New Jersey,
- New York,
- Pennsylvania

Capital Region - 2

- Delaware,
- District of Columbia,
- Maryland,
- Virginia,
- West Virginia

South Central - 5

- Alabama,
- Arkansas,
- Kentucky,
- Louisiana,
- Mississippi,
- Tennessee

Southern Mountain - 7

- New Mexico,
- Oklahoma,
- Texas

Southeastern - 3

- Florida,
- Georgia,
- North Carolina,
- South Carolina

Numbers indicate District Designation

★ Indicates Active Chapter



Chapters In Areas Throughout the World

Canada – Dist 26

Asia / Pacific

Australia - Dist. 28
Hong Kong SAR - Dist 37
Japan - Dist. 19
Singapore - Dist. 31
South Korea - Dist. 15
Taiwan – Dist 14

South Africa - Dist. 25

Current Initiatives:

Mexico
India
Brazil



Europe

- Austria - Dist. 35
- France - Dist. 22
- Germany - Dist. 17
- Greece - Dist. 32
- Israel – Dist 30
- Italy - Dist. 20
- Luxembourg - Dist. 27
- Russian Federation - Dist. 33
- Saudi Arabia - Dist. 11
- Scandinavia - Dist. 23 (Norway, Sweden, Denmark, Finland, Iceland, Faeroe Islands)
- Spain - Dist. 29
- Turkey - Dist 36
- United Kingdom – Dist 18

Virtual District – 34-01 (Europe); 34-02 (Asia/Pacific); 34-03 (All other)



Membership Benefits



Membership Benefits

- Professional quarterly journal: *Logistics Spectrum*
- Robust Website: *www.sole.org*
- Discounts on **SOLE Press** books
- Professional designation and certification programs
- SOLE Scholarships and Doctoral Dissertation awards
- Annual International Symposium
- International Logistics Congresses
- Single topic workshops and conferences
- Thought Leader forums
- Regional training and Professional Development Forums
- Local Chapter meetings
- Networking and Mentoring opportunities
- Technical references (*as published*): **SOLEtech; Annals**

.....



SOLE Web Site

- **www.sole.org**
 - Membership Information
 - Hot News & Calendar of Events
 - Points of Contact
 - Links to technical information
 - DL/CML/CPL Program Information
 - Scholarship Application forms
 - Employment Postings (jobs offered/resumes)



Logistics Education Foundation

- Independent, non-profit corporation
 - Fundraising arm for the Society's educational initiatives
- Encourages, promotes, and facilitates education of professional logisticians, engineers, managers, and educators through funding of SOLE scholarships and doctoral dissertation awards
- Designs and sponsors projects for improving quality of logistics research and teaching



SOLE'S Educational Imperative:
Developing Professional Logisticians



SOLE's Educational Imperative

*SOLE - The International Society of Logistics is a non-profit, international professional society devoted to scientific, **educational** and literary endeavors to enhance the art and science of logistics technology, **education** and management.*

- **“Logistics Management Professionalization Guide”**
 - Published in 2005, the guide provides a recommended baseline for the educational courses and training necessary to expand the knowledge/capability/performance of logisticians
 - *Developed in response to the need in industry and government worldwide for a comprehensive career path that culminates in SOLE certification*
 - *Establishes recommended baselines for*
 - *Foundation competencies*
 - *Professional Development Training*
 - *Individual Skill Area*
- **Rounds out SOLE's designation and certification programs**
 - Builds upon a 30+ year internationally-recognized and respected educational and professional development focus and record of achievement

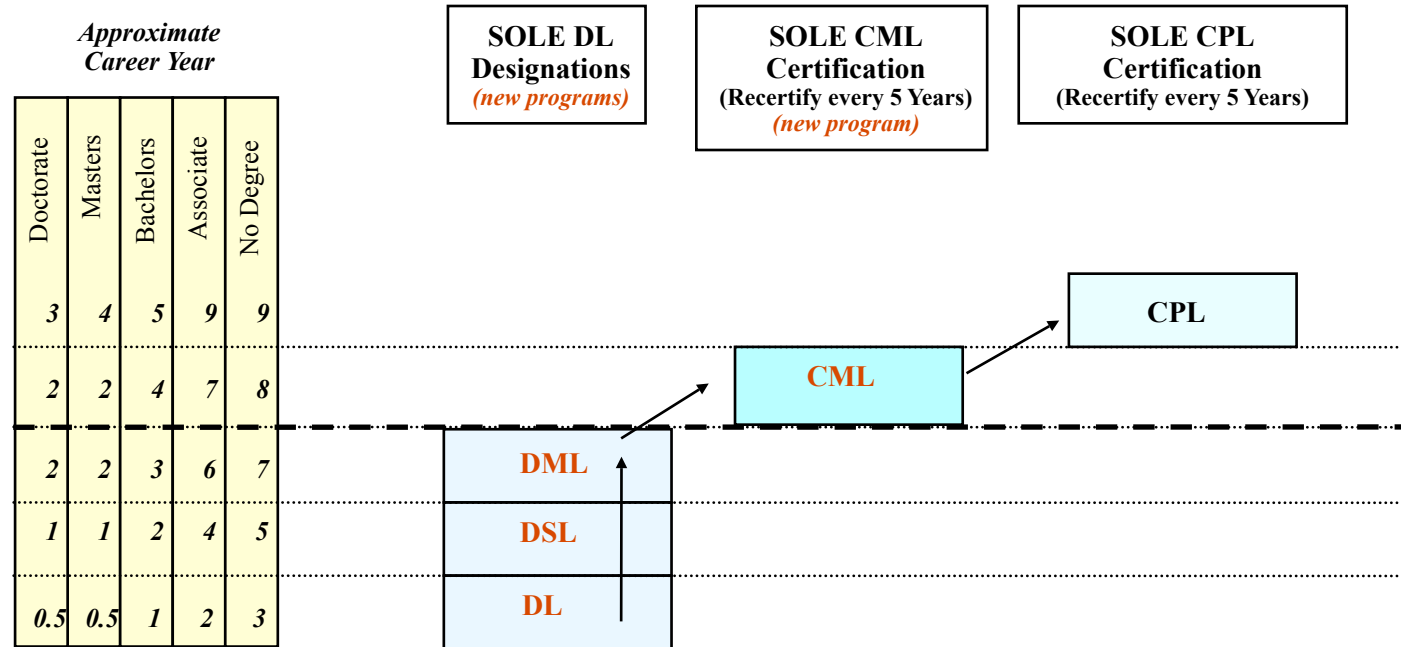


Value Added Development Programs

- Provide recognition of professionalism across corporate boundaries
- Provide international recognition of professionalism
- Provide integrated growth paths and certification/recognition milestones in the career development process
- Provide basis for common training and approach to logistics throughout the profession
- Enhance employee retention and utilization
- Provide competitive advantage while improving the bottom line



Growing Tomorrow's Logistician Today



LEGEND

<i>Experiential/Educational Designation</i>	<i>Experiential/Educational/Examination Certification</i>
DL = Demonstrated Logistician	CML = Certified Master Logistician
DSL = Demonstrated Senior Logistician	CPL = Certified Professional Logistician
DML = Demonstrated Master Logistician	



Complementary SOLE Initiatives

DoD

Industry

Academia

International



DoD Initiatives

- Service recognition of DL/CML/CPL in official military personnel records
 - Army expansion of December 2004 inclusion of CPL in ORB/OMPF to add the CML
 - Air Force recognition of CPL
 - *Initial recognition being staffed with CASCOM/ALMC assistance*
- Service recognition/expansion of the Designated Logistician Program
 - Army
 - *Ordnance Corps promulgation/Quartermaster Corps full implementation*
 - *Inclusion on ORB/OMPF*
 - Marine Corps integration
 - *Marine Corps Systems Command embedding into professional development program*
 - Air Force program development
- Army Logistics Management College – SOLE Joint Logistics Education and Development Forums, inaugurated May 2007 (semi-annual)
 - Supporting the Joint Chiefs of Staff J4 in the identification and development of a Joint Logistics Education and Development continuum
 - *Bringing academia, combatant commands, service schools and the Joint Staff to develop the future logisticians operating in the joint/coalition/global logistics enterprise*



Industry Initiatives

- Educational initiative with AIAA (American Institute of Aeronautics and Astronautics)
 - Specifically with the Space Logistics Technical Committee
 - *SOLE, under contract to MIT, hosted the NASA, industry, academia, association participating Space Exploration Logistics Workshop on 17-18 January 2006*

- NASA/SOLE Space LogOps Workshop, April 2007
 - Growing a Space LogOps community of expert practitioners

- McGraw-Hill **SOLE Press**
 - Inaugurated December 2005 – 4 volumes published to date
 - *Includes SOLE's first commissioned work, **Quantitative Measurements of Logistics** by Philip Frohne, CPL, Chair, SOLE CPL Qualifications Review Board*
 - *James V. Jones's **Integrated Logistics Support Handbook (3rd Edition)***
 - *James V. Jones's **Supportability Engineering Handbook***
 - *John W. Langford, CPL's **Logistics: Principles and Applications (2nd Edition)***



Initiatives With Academia

- Development of Academic Graduate Programs
 - Embry-Riddle Aeronautical University
 - *Graduate Program in Logistics and Supply Chain Management*
 - *SOLE originally helped develop/establish the undergraduate logistics program; new program will be in their school of extended graduate studies*

- MS in Humanitarian and Disaster Relief Logistics
 - In conjunction with Florida Institute of Technology, design and development of an educational program designed to fill the critical need for professional logisticians to support humanitarian and disaster relief planning and operations
 - *SOLE scholarships to be made available for selection/award/management*
 - *Target for initial program placements – Spring 2008*

 - SOLE concurrently developing a certification to complement successful completion of program



SOLE's International Initiatives

- **Victoria University/SOLE Designation/Certification Alliance**
 - SOLE's Designation and Certification Programs being investigated in response to a Request for Tender for the professionalization and development of the DMO acquisition/logistics workforce
 - *Outgrowth of the Commonwealth of Australia's Defence White Paper, Defence 2000 – Our Future Defence Force*
 - *Central strategy is the DMO Professional Agenda*
 - *6,500 people over 50 sites throughout Australia and overseas*
 - *Goal is to provide a range of professional development activities to meet future skill sets and increase the professional standing of the DMO*
 - *The major elements are the certification and chartering of workforce competence against the highest professional standards available; ongoing professional development; and up-skilling as achieved through accredited education and training programs*
 - When finalized, Victoria University will act as SOLE's agent through a formal agreement for both DMO and commercial administration and training

- **Taiwan Designated Logistician Program**
 - Taiwan Chapter/Global Logistics Council of Taiwan conducting body of knowledge training with goal of producing Demonstrated Logisticians
 - *Two sessions since October 2006 – 69 individuals trained to date; 15 individuals under review for award of DL*

- **National University of Athens Distance Learning Curriculum Development**
 - In conjunction with UNICON, develop a distance learning logistics engineering curriculum
 - *Goal is to formalize comprehensive coverage of the logistics body of knowledge so as to facilitate attainment of the CPL*
 - *Designed to ensure that those participating students from the Hellenic Ministry of Defense organizations receive education comparable to that of their NATO/US Defense counterparts.*



Summary

- **SOLE is a non-profit professional association dedicated to promoting the art and science of logistics through education**
- **SOLE offers its members a quarterly journal, monthly technical newsletter, and local meetings highlighting guest speakers and/or technical issues**
- **SOLE hosts regional, national and international workshops and symposia**
- **SOLE has the only internationally recognized certification program for Professional Logisticians**
- **SOLE provides the opportunity to network with professional logisticians worldwide**
- **SOLE serves as “honest broker” in establishing DoD, Industry and Academic relationships and dialogues to address ‘state of the profession’ issues, across the total spectrum of life cycle logistics.**



Upcoming Activities

- **SOLE District 04 Professional Development Forum (9-10 October 2007)**
 - Theme: *The Human Element of Sense & Respond Logistics*
 - Venue: *Omni Severin Hotel*
 - Location: *Indianapolis, Indiana*

- **SOLE District 02 Professional Development Forum (26-27 March 2008)**
 - Theme: *Configuration Management: A Key to Lifecycle Sustainment*
 - Venue: *Omni Hotel*
 - Location: *Newport News, Virginia*

- **43rd Annual International Logistics Symposium and Exposition (17 - 21 August 2008)**
 - Theme: *Logistics Transformation and the Global Economy*
 - Venue: *Caribe Royale Orlando*
 - Location: *Orlando, Florida*



For More Information

SOLE Headquarters

Ms. Sarah James

Executive Director

301-459-8446 voice; 301-459-1522 fax

solehq@erols.com



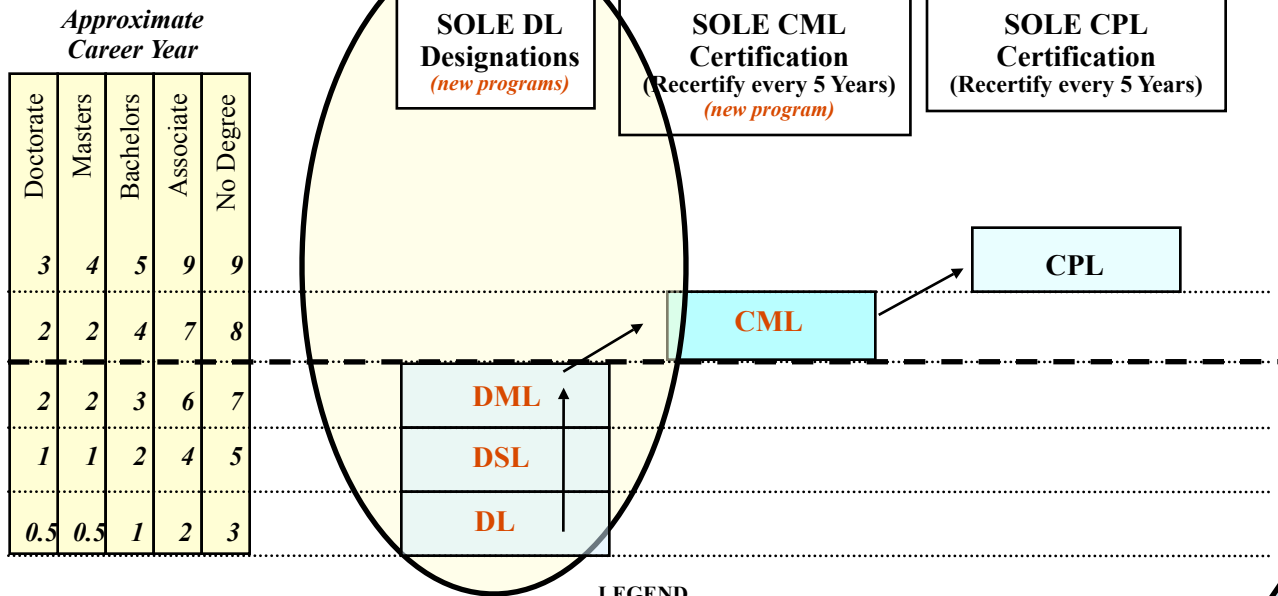
Backup Slides



Designated Logistician Program



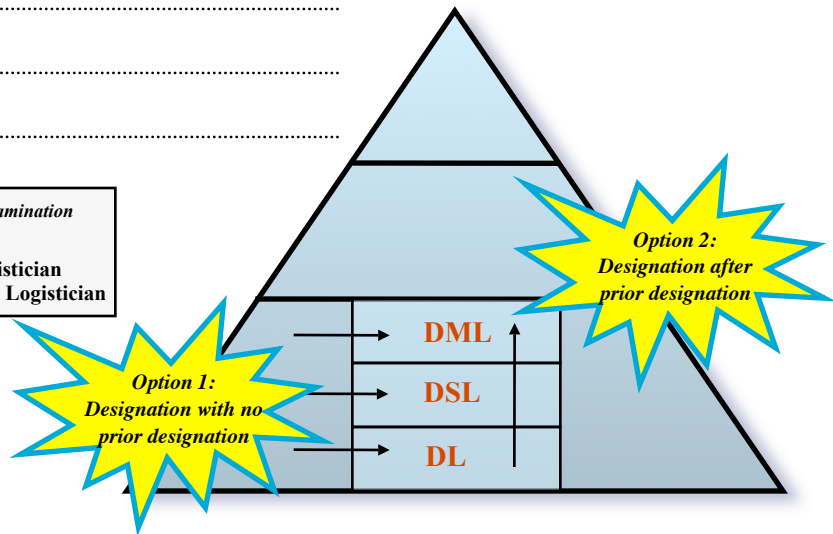
Designated Logistician: A First Step



LEGEND

Experiential/Educational Designation	Experiential/Educational/Examination Certification
DL = Demonstrated Logistician	CML = Certified Master Logistician
DSL = Demonstrated Senior Logistician	CPL = Certified Professional Logistician
DML = Demonstrated Master Logistician	

- Need first identified during March 2003 DoD Logistics Education and Training Integrated Process Team Roundtable, convened by the DUSD (L&MR)
- Replaced long-standing certificate programs jointly sponsored by SOLE and the Army and Air Force
- Developed to include all logisticians, regardless of type (i.e., civilian/military), venue (commercial/industry/defense), grade/rank (enlisted/officer/GS), or location (US/international)





Designated Logistician Program



GLCT – in progress

Lockheed Martin – under investigation



At Raytheon, development paths determined by employee and supervisors, building upon SOLE's core demonstrated competencies

Implemented
FY 2005

Other industry companies investigating company-unique applications ...

Air Force – in development

Target
for beta-test
FY 2008

Implemented
FY 2005

The Army's program provides specific career development, based on Army-identified formal education, training, lifelong learning and experience



Implemented
FY 2005

SOLE program provides recognition for continued education and performance at the beginning of the career.



Certification Programs

Certified Master Logistician
Certified Professional Logistician



Why Certify?

- *Certification by a recognized professional organization has always been the hallmark of individual excellence in one's chosen profession.*
- *Attainment of this certification attests to our employers, fellow employees, and customers the commitment that we as individuals and as an organization have to providing the best logistics services and support for their programs.*



Available Options for Certification

- Develop Local Certification Program
- Use a Certification Program from an accredited, recognized international professional organization
 - American Society of Transportation & Logistics (AST&L)
 - APICS - The Educational Society for Resource Management
 - Certified Claims Professional Accreditation Council (CCPAC)
 - Chartered Institute of Logistics & Transport (CILT)
 - Institute for Supply Management (ISM)
 - Institute of Certified Management Accountants (IMA)
 - Institute of Management Consultants (IMC)
 - Institute of Packaging Professionals (IoPP)
 - Institute of Logistical Management (ILM)
 - Materials Handling & Management Society (MHMS)
 - National Private Truck Council (NTPC)
 - SOLE - The International Society of Logistics (SOLE)
 - International Warehouse Logistics Association (IWLA)



Option Comparison

	Customer Alignment	Cross Corporation	International Recognition	Integrated Growth Paths	Common Tools Integration	Common Training	Cost Effective
Local Development	●	●	●	●	●	●	●
SOLE	●	●	●	●	●	●	●
CILT (Supply Chain Only)	●	●	●	●	●	●	●
APICS	●	●	●	●	●	●	●

SOLE's Integrated Professional Logistician Development Program is in Place and Recognized Internationally



CML: The Log Chain Mgmt Expert

Approximate Career Year

Doctorate	Masters	Bachelors	Associate	No Degree
3	4	5	9	9
2	2	4	7	8
2	2	3	6	7
1	1	2	4	5
0.5	0.5	1	2	3

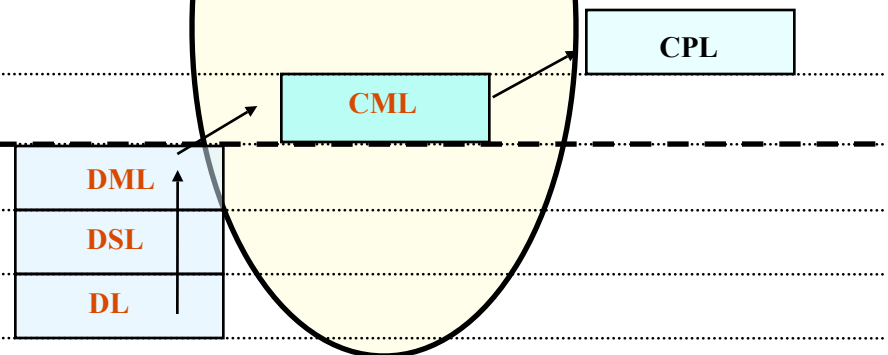
SOLE DL Designations
(new programs)

SOLE CML Certification
(Recertify every 5 Years)
(new program)

SOLE CPL Certification
(Recertify every 5 Years)

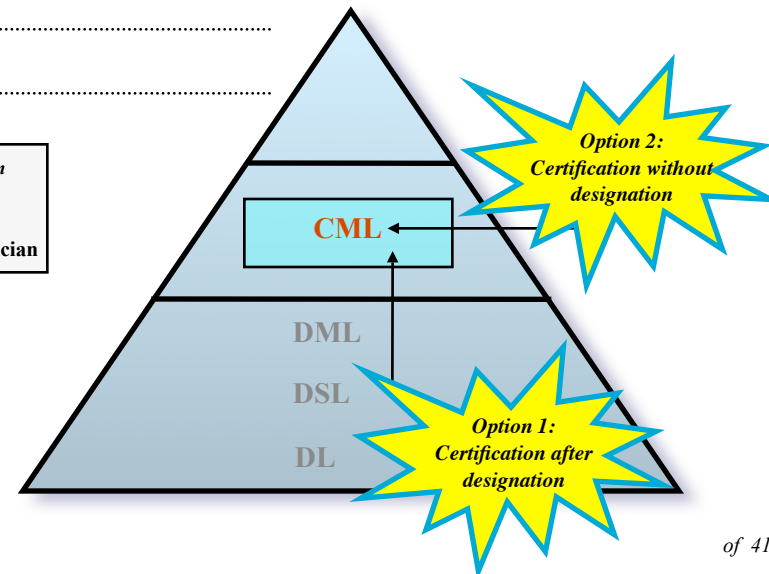


2006 Inauguration



LEGEND

<i>Experiential/Educational Designation</i>	<i>Experiential/Educational/Examination Certification</i>
DL = Demonstrated Logistician	CML = Certified Master Logician
DSL = Demonstrated Senior Logistician	CPL = Certified Professional Logistician
DML = Demonstrated Master Logistician	



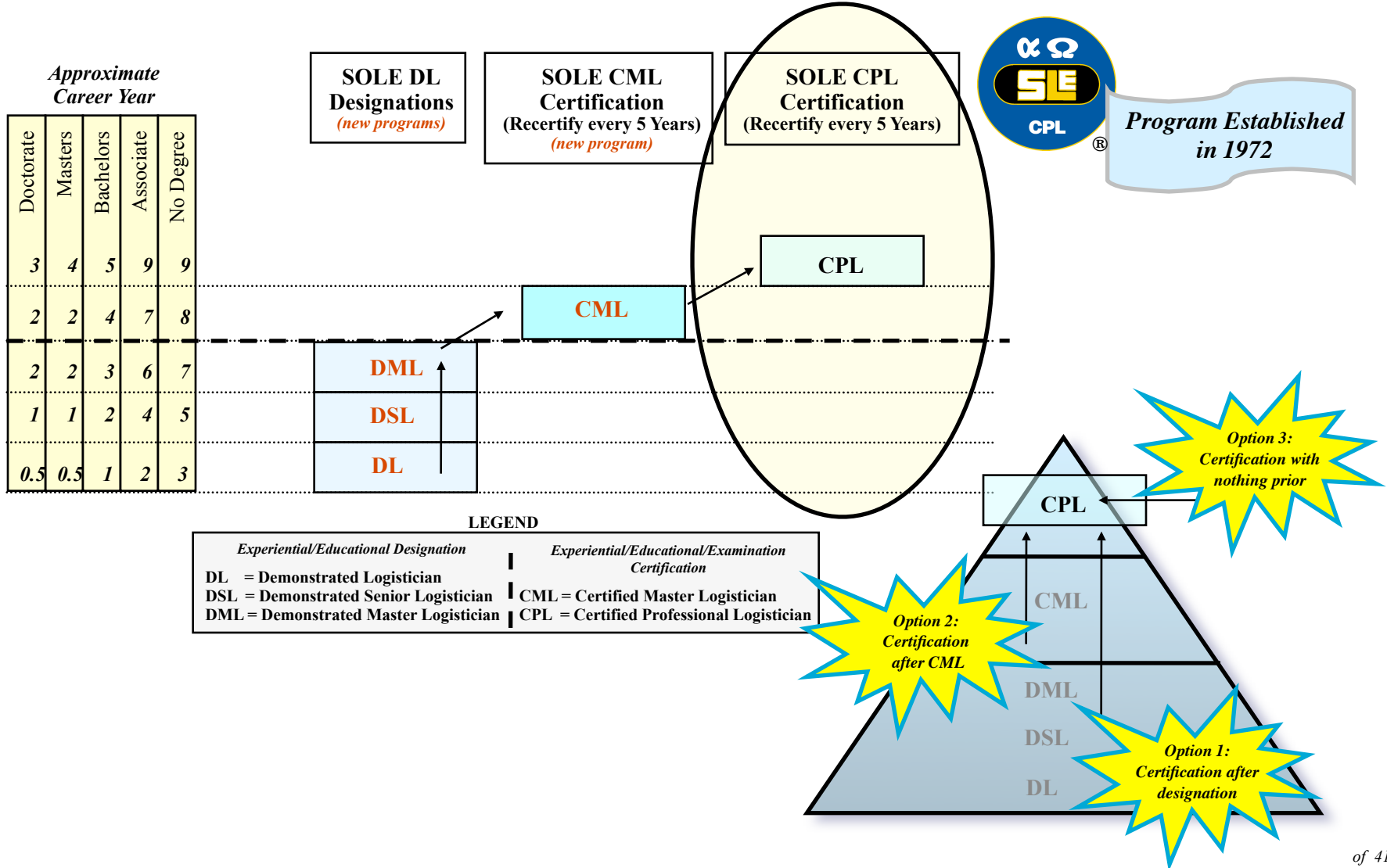


Certified Master Logistician

- First exam in May 2007
- Focus on Logistics Chain Management
 - Program Management
 - Supply Chain Operations
 - Integrated Applications
- Required education, experience and a 6 hour, three-part exam



CPL: The Life Cycle Logistician





Certified Professional Logistician

- Introduced in 1972
- Over 2,300 active CPLs throughout the world
- Covers entire spectrum of the Logistics Discipline
 - Systems Management
 - System Design and Development
 - Acquisition and Production Support
 - Distribution and Customer Support
- Required education, experience and an 8 hour, four-part exam